

SECULAR SONGS  
BY  
JAMES SPENCER



AFTER PARTING

*Low Voice, Key B $\flat$  (b- $\mathcal{E}$ )*

*High Voice, Key D (d-g)*

TONIGHT

*Low Voice, Key  $\mathcal{E}$  $\flat$  (b-C)*

*Medium Voice, Key G (d- $\mathcal{E}$ )*

MOODS

*Low Voice, Key D (b-D)*

*Medium Voice, Key  $\mathcal{E}$  (c- $\mathcal{E}$ )*

A GAILEY DRESSED DAMSEL

*Low Voice, Key  $\mathcal{E}$  $\flat$  (b- $\mathcal{E}$ )*

*High Voice, Key G (d-g)*

DO I LOVE THEE?

*Low Voice, Key C (a- $\mathcal{E}$ )*

*High Voice, Key  $\mathcal{E}$  $\flat$  (c-g)*

PRICE,  CENTS, EACH

WHITE-SMITH MUSIC PUBLISHING CO.

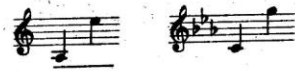
BOSTON

NEW YORK

CHICAGO

To Cornelia Hull Miller .

# Do I Love Thee?



Verse by  
JOHN G. SAXE

Music by  
JAMES SPENCER

*Allegretto* *mf*

VOICE Do I love thee? Ask the

PIANO *mf*

bee If she loves the flow-ry lea Where the hon-ey-suck-le

*p*

blows And the fra-grant clover grows. As she answers, Yes or No, Yes or No,

*accel. molto e cresc.*

*accel. molto e cresc.*

Copyright, 1920, by White-Smith Music Publishing Co.  
International Copyright Secured

*ff* *a tempo* *mf*

Darl - ing! take my an - swer so. Do I

love thee? Ask the flow'r If she loves the ver - nal show'r, Or the

*meno mosso* *accel. molto e cresc.*

kiss - es of the sun, Or the dew, when day is done. As she answers, Yes or No, Yes or No,

*meno mosso* *accel. molto e cresc.*

*ff* *a tempo* *mf*

Darl - ing! take my an - swer so. *l.h.*

*ff* *mf a tempo* *poco rit.*